

ProMast[®]
■ insulates ■ seals ■ bonds

A stylized graphic on a dark grey background featuring various construction-related elements. On the left, a large, light blue 'S' shape is formed by a thick, wavy line. Above it is a green horizontal bar with a pointed left end. To the right of the 'S' is a white rectangular box containing the text 'INNOVATIVE FORMULATIONS FOR MASTER SOLUTIONS'. Below the box is a grey horizontal bar with a pointed right end. To the right of the box is a large orange 'U' shape. Below the 'U' is a 3x3 grid of red circles. At the bottom left are two green circles. At the bottom right is a yellow horizontal bar with a pointed right end.

**INNOVATIVE
FORMULATIONS
FOR MASTER
SOLUTIONS**

We strive for maximum efficiency by utilizing available resources effectively and producing high-quality products that meet the industry's needs.

Promast offers innovative solutions for the construction sector with its advanced products designed for assembly, insulation, filling, and sealing applications. With a wide portfolio of PU foams, silicones, polyurethane, and hybrid-based products, we provide reliable options for both professional and individual users.

Through its R&D-driven approach, eco-friendly production, and processes aligned with international quality standards, Promast aims to stand out in the industry.





06

**MS POLYMER
ADHESIVES &
SEALANTS**

12

SILICONES

22

**AEROSOL PU
FOAMS**

05

CONTENTS



30

PU ADHESIVES

32

SEALANTS

34

TECHNICAL
SPRAYS

MS POLYMER ADHESIVES & SEALANTS

Liquid Membranes SINGLE-COMPONENT WATERPROOFING



AQUA SHIELD HV - HIGH VISCOSITY LIQUID MEMBRANE

Promast Aqua Shield HV is an MS polymer-based, single-component, environment-friendly, high-viscosity waterproofing sealant. It is preferred to repair and provide long-lasting protection in horizontal and vertical areas. Suitable for use in all seasons. Promast Aqua Shield HV does not contain solvents, isocyanates, or bitumen.

SPECIFICATIONS

- Applied with brush, trowel, or spatula.
- Remains permanently elastic.
- Penetrates deep gaps and cavities.
- Surface curing begins approximately 30 minutes after application.
- No volume loss over time.
- Does not crack.
- Odorless.
- Not affected by surface moisture during curing.
- Does not form bubbles.
- UV-resistant.
- Resistant to harsh weather conditions.
- Can be painted over.
- Suitable for both interior and exterior applications.

APPLICATION AREAS

Used in interior and exterior areas, under-tile waterproofing of wet surfaces, building foundations, ground slabs, terraces, balconies, roofs, bridge deck concretes, concrete surfaces exposed to continuous vibration, concrete cracks, water tanks (for both horizontal and vertical applications), and at junction points of materials such as aluminum, metal sheet, and iron.

SHELF LIFE	PACKAGING OPTIONS		COLOR
15 Months	1 mm thickness: 1-1.5 kg/m ²		Concrete Grey
	1 kg In tin container	In 14 kg plastic bucket In 2x7 kg aluminum case	

Tack-free Time 60 mins Full Curing Time: 20 h Density: 1,41± 0,05 g/ml Max. Tension (DIN 53504): 1,20 N/mm²
Elongation at Break (DIN 53504): %300 Viscosity: 250.000 CPS

Liquid Membranes
SINGLE-COMPONENT WATERPROOFING



LV



PMP-011

PMP-002

AQUA SHIELD LV - LOW VISCOSITY LIQUID MEMBRANE

Promast Aqua Shield LV is an MS polymer-based, single-component, environmentally friendly, low-viscosity liquid sealant. It is preferred for long-lasting floor leveling for horizontal areas. Suitable for all seasons. Promast Aqua Shield LV does not contain solvents, isocyanates, or bitumen.

SPECIFICATIONS

- Applied with a brush, short-haired roller, or squeegee.
- Remains permanently elastic.
- Penetrates deep gaps.
- Surface curing begins in approximately one hour.
- Does not lose volume over time.
- Does not crack, odorless.
- Suitable for both interior and exterior use.
- Not affected by surface moisture during curing.
- Does not form bubbles.
- UV resistant.
- Resistant to harsh weather conditions.
- Can be painted over.

APPLICATION AREAS

It is used on domes, curved surfaces, concrete surfaces exposed to continuous vibration, in the joints and screw areas of trapezoidal and sandwich panel roof coverings, on concrete cracks, in water tanks and their horizontal applications, in interior and exterior areas, in waterproofing applications under wet floors, in building foundations, floor slabs, terraces, balconies, roofs, and in bridge deck concretes.

SHELF LIFE	PACKAGING OPTIONS		COLOR
15 Months	1 mm thickness: 1-1.5 kg/m ²		Concrete Grey
	1 kg In tin container	In 14 kg plastic bucket In 2x7 kg aluminum case	

Tack-free Time: 60 mins Full Curing Time: 20 h Density: 1,34± 0,05 g/ml Max. Tension (DIN 53504): 1,20 N/mm²

Elongation at Break (DIN 53504): %400 Viscosity: 9.500 CPS

MS POLYMER ADHESIVES & SEALANTS



MSP-110

MS SL SELF-LEVEL LIQUID MEMBRANE

Promast MS SL is a self-leveling crack sealing mastic. It is single-component and environmentally friendly. It penetrates perfectly into horizontal, narrow, and deep concrete or cement cracks exposed to high movement, filling the gaps effectively. It spreads evenly and provides permanent elasticity. Promast MS SL contains no solvents or isocyanates and has a low VOC content.

SPECIFICATIONS

- Penetrates deep gaps.
- Cures 30 minutes after application.
- Spreads evenly and uniformly over the surface.
- Can be sprayed onto vertical surfaces.
- Remains permanently elastic.
- UV resistant.
- Can be painted over.
- Resistant to harsh weather conditions.
- Does not shrink, contract, or crack over time.
- Contains no hazardous chemicals and is odorless.
- Does not cause yellowing.
- Not affected by surface moisture during curing and does not form bubbles.

APPLICATION AREAS

- In concrete cracks caused by water leakage, in hard-to-reach fine vertical cracks, for filling insulation molds, and in areas such as driveways, garages, sidewalks, warehouses, and concrete or cement surfaces exposed to continuous vibration.

SHELF LIFE	15 Months
VOLUME	290 ml cartridge
COLOR	Concrete Grey
Basis	MS polimer
Hardness (DIN 53505)	25 ± 5 Shore A

Density	1,30 ± 0,05 g/ml
Skin Formation (20°C/65% R.H.)	(2- 3) mm / 24 h
Elasticity Modulus 100% (DIN 53504)	> 0,70 N/mm ²
Elongation at Break (DIN 53504)	> 500%



MSP-130

MS 30 HIGH-FLEX SEALANT

Promast MS 30 is an environmentally friendly, single-component, high-modulus, and highly flexible MS Polymer sealant. It is suitable for use in the construction industry. Thanks to its high strength and elasticity, it is preferred for various joint applications. Promast MS 30 contains no solvents or isocyanates and has a low VOC content.

SPECIFICATIONS

- Provides permanent elasticity.
- Cures within 40 minutes after application.
- Not affected by surface moisture during curing and does not blister.
- Color does not change and does not yellow over time.
- Contains no toxic substances and is odorless.
- Offers excellent UV resistance.
- Can be painted over.
- Does not lose volume.
- Resistant to weather conditions.
- Does not sag on the surface.
- Unaffected by severe weather.
- Adheres easily to metal, aluminum, glass, wood, stainless steel, brick, concrete, copper, and certain plastics.

APPLICATION AREAS

- In precast facades and joints, at connection points of areas such as greenhouses or winter gardens, in concrete joints, and in wooden joints.

SHELF LIFE	15 Months
VOLUME	290 ml cartridge, 400 / 600 ml sausage
COLOR	Black, White + 50 color options
Basis	MS Polymer
Hardness (DIN 53505)	30 ± 5 Shore A

Density	1,34 ± 0,05 g/ml
Skin Formation (20°C/65% R.H.)	2,50 mm / 24 h
Elasticity Modulus 100% (DIN 53504)	> 0,50 N/mm ²
Elongation at Break (DIN 53504)	> 800%



MSP-140

MS 40FC MULTI-ADHESIVE

Promast MS 40FC is an environmentally friendly, single-component, MS Polymer-based sealant with a high elasticity modulus, suitable for use in the automotive and construction industries. Thanks to its fast curing and high strength properties, it is especially preferred in the automotive industry, caravan manufacturing, and the joints of prefabricated structures. Promast MS 40FC contains no solvents or isocyanates and has a low VOC content.

SPECIFICATIONS

- Begins curing 15 minutes after application.
- Leaves no stains on natural stone, marble, granite, or similar surfaces.
- Provides excellent adhesion (to metal, aluminum, glass, wood, stainless steel, copper, iron, brick, concrete, certain plastics, and combinations of these materials).
- Does not change color or turn yellow over time.
- Not affected by surface moisture during curing and does not blister.
- Contains no hazardous chemicals and is odorless.
- Low VOC content.
- Provides high UV resistance.
- Can be painted over.
- Does not sag on the surface, does not lose volume.
- Highly resistant to weather conditions.

APPLICATION AREAS

- Used on construction panels, vehicle joints exposed to vibration, window and door frames, decorative moldings, movable joints of caravans, trailers, and refrigerated vehicles, as well as for bonding insulation materials such as polystyrene, mineral wool, and fiberglass.

SHELF LIFE	15 Months
VOLUME	290 ml cartridge, 400 / 600 ml sausage
COLOR	Black, White + 20 color options
Basis	MS Polymer
Hardness (DIN 53505)	40 ± 5 Shore A

Density	1,40 ± 0,05 g/ml
Skin Formation (20°C/65% R.H.)	(2,5 - 3,5) mm / 24 h
Elasticity Modulus 100% (DIN 53504)	> 0,70 N/mm ²
Elongation at Break (DIN 53504)	> 500%



MSP-150

MS 50FC ALL-ROUND ADHESIVE

Promast MS 50FC is an environmentally friendly, single-component, MS Polymer-based adhesive with a high elasticity modulus. Its high load-bearing capacity makes it suitable for use in the construction and industrial sectors. It features fast curing and high strength. Promast MS 50FC is the ideal choice for applications requiring quick assembly. It contains no solvents or isocyanates and has a low VOC content.

SPECIFICATIONS

- Begins curing 15 minutes after application.
- Provides excellent adhesion to most construction materials: concrete, brick, marble, granite, steel plates, aluminum frames, wood, plastic, and bituminous sheets.
- Not affected by surface moisture during curing and does not blister.
- Leaves no stains on natural stone, marble, granite, or similar surfaces.
- Contains no toxic substances and is odorless.
- Provides excellent UV resistance.
- Can be painted over.
- Does not lose volume.
- Resistant to weather conditions.

APPLICATION AREAS

- Used for bonding construction panels, insulation materials, and exterior cladding materials such as composite, marble tile, natural stone, and granite. Suitable for all types of construction bonding applications, including window frames, door steps, greenhouses, containers, and caravans.

SHELF LIFE	15 Months
VOLUME	290 ml cartridge
COLOR	Black, White + 50 color options
Basis	MS Polymer
Hardness (DIN 53505)	50 ± 5 Shore A

Density	1,45 ± 0,05 g/ml
Skin Formation (20°C/65% R.H.)	(2,5 - 3,5) mm / 24 h
Elasticity Modulus 100% (DIN 53504)	> 1,30 N/mm ²
Elongation at Break (DIN 53504)	> 400%

MS POLYMER ADHESIVES & SEALANTS



MSP-160

MS HT HIGH-TACK MONTAGE ADHESIVE

Promast MS HT is an environmentally friendly, single-component, MS polymer-based adhesive with high initial tack. It is preferred for fast assembly applications. Thanks to its quick initial adhesion, it prevents slippage during bonding and saves time. It has a high load-bearing capacity (350 kg/10 cm²). Promast MS HT contains no solvents or isocyanates.

SPECIFICATIONS

- Initial tack: 5 seconds. Heavy load capacity: 350 kg/10 cm².
- Provides excellent and instant adhesion to various materials such as natural stone, metal, aluminum, concrete, ceramic, and plastic.
- Leaves no stains on natural stone, marble, granite, or similar surfaces.
- Not affected by surface moisture during curing and does not blister.
- Color remains stable and does not yellow.
- Recommended for mirror and glass mounting applications.
- Can be applied even underwater.
- Highly resistant to UV rays and weather conditions.
- Non-brittle and does not crack.
- Provides adhesion with or without primer.
- Does not sag on the surface.
- Does not lose volume over time.

APPLICATION AREAS

- Used for fast and strong bonding in curtain rails, sinks, bathroom and garden accessories; fixing construction and insulation materials; mounting window and door frames with accessories; ensuring instant adhesion on metal, aluminum, ceramic, concrete, wood, brick, and plastic surfaces; and in roof, gutter, and heavy accessory installations.

SHELF LIFE	15 Months
VOLUME	290 ml cartridge
COLOR	White, Black
Basis	MS Polymer
Hardness (DIN 53505)	60 ± 5 Shore A

Density	1,52 ± 5 g/ml
Skin Formation (20°C/65% R.H.)	3,00 mm / 24 h
Elasticity Modulus 100% (DIN 53504)	> 1,70 N/mm ²
Elongation at Break (DIN 53504)	> 400%



MSP-175

IND 70 INDUSTRIAL ADHESIVE

Promast MS IND70 is a single-component, environmentally friendly, high-performance adhesive that provides strong bonding and sealing while remaining flexible and durable. Promast MS IND70 contains no solvents or isocyanates.

SPECIFICATIONS

- Single-component formulation.
- Resistant to saltwater.
- Provides excellent and instant adhesion between various materials and their combinations, including metal, aluminum, ceramic, concrete, wood, brick, and plastic.
- Not affected by surface moisture during curing and does not form bubbles.
- Maintains color stability and does not yellow over time.
- Contains no toxic substances and is odorless.
- Can be applied underwater.
- Provides adhesion with or without primer.
- Can be painted over.
- Does not sag on the surface.
- Does not lose volume.
- Resistant to weather conditions.
- Remains elastic after curing.

APPLICATION AREAS

- Transportation & Automotive: For bonding metal, glass, and plastic components in vehicles. Construction: For fixing metal, concrete, brick, and wood materials. HVAC: For securing ducts, pipes, and fittings. Electrical & Electronics: For bonding insulation-required components. Marine: For bonding boat, ship, metal frame, and polyester parts with water and salt resistance.

SHELF LIFE	15 Months
VOLUME	600 ml sausage
COLOR	Black
Basis	MS Polymer
Hardness (DIN 53505)	60 ± 5 Shore A

Density	1,5 g/ml
Skin Formation (20°C/65% R.H.)	2,50 mm / 24 h
Elasticity Modulus 100% (DIN 53504)	3 N/mm2
Elongation at Break (DIN 53504)	< 400 %



MSP-145

CLEARFIX CRYSTAL CLEAR MULTI ADHESIVE SEALANT

Promast Clearfix is an environmentally friendly, single-component, transparent MS polymer-based adhesive sealant with a high elasticity modulus, suitable for use in the automotive and construction industries. Promast Clearfix contains no solvents or isocyanates and has a low VOC content.

SPECIFICATIONS

- Fast curing. Cures 15 minutes after application.
- Leaves no stains on natural stone, marble, granite, or similar surfaces.
- Provides excellent adhesion to metal, aluminum, glass, wood, stainless steel, copper, iron, brick, concrete, certain plastics, and combinations of these materials.
- Color remains stable and does not yellow.
- Not affected by surface moisture during curing and does not blister.
- Contains no hazardous chemicals and is odorless.
- Provides high UV resistance.
- Can be painted over.
- Does not sag on the surface.
- Does not lose volume.
- Highly resistant to weather conditions.

APPLICATION AREAS

- Used for bonding construction panels such as plywood, laminated wood, OSB, and particle board; for attaching window frames, door steps, and decorative moldings; for bonding and sealing glass and other transparent surfaces; in joints of structures like greenhouses and winter gardens; on vibrating surfaces; for bonding porous and non-porous materials; in both interior and exterior applications; and for bonding two glass surfaces together.

SHELF LIFE	15 Months
VOLUME	290 ml cartridge, 400 / 600 ml sausage
COLOR	Crystal Clear
Basis	MS Polymer
Hardness (DIN 53505)	40 ± 5 Shore A

Density	1,05 ± 0,05 g/ml
Skin Formation (20°C/65% R.H.)	3,00 mm / 24 h
Elasticity Modulus 100% (DIN 53504)	> 0,60 N/mm ²
Elongation at Break (DIN 53504)	> 500%



MSP-135

AUTOBOND FC MULTI-PURPOSE ADHESIVE SEALANT

Promast Autobond FC is an environmentally friendly, single-component, multi-purpose adhesive with a high elasticity modulus, suitable for automotive applications. Its hybrid structure, fast curing, and high strength make it ideal for caravan manufacturing and vehicle assembly. It contains no solvents or isocyanates and has a low VOC level.

SPECIFICATIONS

- Fast curing. Cures 15 minutes after application.
- Provides excellent adhesion to metal, aluminum, glass, wood, stainless steel, copper, certain plastics, and combinations of these materials.
- Not affected by surface moisture during curing and does not blister.
- Maintains color stability and does not yellow over time.
- Highly resistant to weather conditions.
- Contains no hazardous chemicals and is odorless.
- Provides high UV resistance.
- Can be painted over.
- Does not sag on the surface.
- Does not lose volume.

APPLICATION AREAS

- Used in movable joints of special vehicles such as caravans, refrigerated trucks, and trailers; for bonding insulation materials such as polystyrene, mineral wool, fiberglass, and polyurethane; in vehicle roofs and canopies; on stair steps; for vehicle air conditioning installations; for interior and exterior fixing applications; and in vibrating metal joints of all types of vehicles.

SHELF LIFE	15 Months
VOLUME	290 ml cartridge
COLOR	White, Grey, Black
Basis	MS Polymer
Hardness (DIN 53505)	40 ± 5 Shore A

Density	1,40 ± 0,05 g/ml
Skin Formation (20°C/65% R.H.)	(2,5 - 3,5) mm / 24 h
Elasticity Modulus 100% (DIN 53504)	> 0,70 N/mm ²
Elongation at Break (DIN 53504)	> 500%

SILICONES



UNLIMITED COLOR OPTIONS

FACADE

CONSTRUCTION SILICONE





PMS-455

FACADE CONSTRUCTION SILICONE

A neutral construction silicone that provides high performance in joints and connection points on building façades, maintaining its flexibility under harsh weather conditions and temperature variations.

SPECIFICATIONS

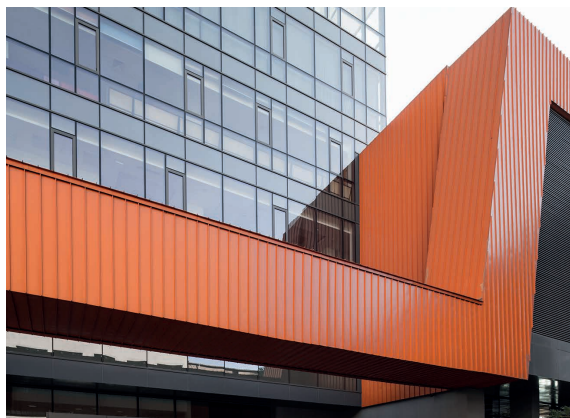
- Possesses high movement capability.
- Unaffected by weather conditions and temperature changes; long-lasting.
- Does not shrink or crack.
- Non-sag on vertical surfaces.
- Provides excellent adhesion without primer to construction materials such as concrete, stone, brick, wood, steel, and glass.
- Offers high UV resistance.
- Suitable for almost all types of sealing applications in buildings.
- Provides strong adhesion to most construction materials, including concrete, brick, wood, aluminum, and plastics.

APPLICATION AREAS

- Used on concrete, metal, brick, plastic, PVC, wood, and aluminum joinery; in door and window frames, expansion joints of high-rise buildings, curtain wall systems, connection and dilation joints; on marble, granite, natural stones, and delicate metals; for weather-resistant sealing, bonding, and glass installation applications.

SHELF LIFE	15 Months
VOLUME	310 ml cartridge, 600 ml sausage
COLOR	Unlimited Color Options
Basis	Neutral
Consistency	Thixotropic
Density	1,03 g/ml +/- 0,02 – 1,45 g/ml +/- 0,02
Application Temperature	Between 5°C ve +40°C
Elastic Recovery	> %70

Tack-free Time	20 mins
Skin Formation (20°C/65% R.H.)	2-3 mm / day
Curing System	Moisture Curing
Max Tension (DIN 53504)	> 1 N/mm ²
Hardness (DIN 53505)	25 ± 5 Shore A
Temperature resistance (Cured)	Between -60°C +180°C
Elasticity Modulus 100% (DIN 53504)	> 0,25 N/mm ²
Elongation at Break (DIN 53504)	> %450



SILICONES



PMS-452

WEATHERSEAL NEUTRAL SILICONE

A neutral silicone that delivers high performance in joints and connection points on building façades, maintaining its flexibility under harsh weather conditions and temperature variations.

SPECIFICATIONS

- Possesses high movement capability.
- Unaffected by weather conditions and temperature variations; long-lasting.
- Does not shrink or crack.
- Non-sag on vertical surfaces.
- Provides excellent adhesion to construction materials such as concrete, stone, brick, wood, steel, and glass.
- Offers high UV resistance.
- Provides adhesion with or without primer.

APPLICATION AREAS

- Used in all curtain wall joints, building connection and expansion joints, flexible joints of structures, window, door, and frame installations, and in weather-resistant bonding and sealing applications.

SHELF LIFE	15 Months
VOLUME	310 ml cartridge, 600ml sausage
COLOR	Black
Basis	Neutral Oxime
Hardness (DIN 53505)	30 ± 5 Shore A

Density	1,02 g/ml – 1,40 g/ml
Skin Formation (20°C/65% R.H.)	2-3 mm / day
Tack-free Time	20 mins
Elongation at Break (DIN 53504)	> %800
Elastic Recovery (ISO 7389)	> %80



PMS-770

B1 FIRESEAL 6-HOURS FIRE RATED SILICONE

A specially formulated silicone developed for fire-rated applications; it does not propagate flame and maintains its flexibility and sealing performance even when exposed to fire for extended periods.

SPECIFICATIONS

- Fire resistant for up to 6 hours.
- Provides strong adhesion without primer to most porous and non-porous construction materials.
- Offers high movement capability up to 25%.
- Low odor and non-corrosive.
- Highly resistant to weather conditions, UV rays, and sudden temperature changes.
- Suitable for use on alkaline surfaces such as concrete and brick, as well as on delicate metals.

APPLICATION AREAS

- Used for fire-resistant insulation of electrical cables and conduit pipes, in movement joints where fire-resistant sealing is required, in all applications where maintaining sealing performance under flame exposure is critical, and in areas where fire regulations mandate compliance.



SHELF LIFE	15 Months
VOLUME	280 ml cartridge, 600ml sausage
COLOR	White
Basis	Neutral
Hardness (DIN 53505)	40 ± 5 Shore A

Density	1,26 gr/lt
Skin Formation (20°C/65% R.H.)	1-3 mm / day
Tack-free Time	10 mins
Elongation at Break (DIN 53504)	> %150



PMS-260

SANITAN HYGIENE SILICONE

A high-performance, fast-curing, 100% pure acetoxysilicone specially formulated to provide sealing in wet and humid environments while preventing mold and mildew formation.

SPECIFICATIONS

- Made of 100% pure silicone.
- Does not shrink or crack.
- Resistant to cleaning agents and chemicals.
- Fast curing and provides quick sealing.
- Highly resistant to moisture and mold.
- Offers an aesthetic and glossy finish.
- Provides strong adhesion to non-porous surfaces such as tile, ceramic, and glass.

APPLICATION AREAS

- Used in areas with constant water contact and high humidity (such as saunas, pools, baths, kitchens, and bathrooms); for installation and sealing of wet-area materials like shower cabins, bathtubs, and sinks; in plumbing penetrations, cold storage rooms, and kitchen or bathroom furniture; and in all sealing applications where mold and mildew formation is undesirable.

SHELF LIFE	15 Months
VOLUME	280 ml cartridge
COLOR	Transparent, White
Basis	Acetoxysilicone
Hardness (DIN 53505)	20 ± 5 Shore A

Density	1,02 gr/lt
Skin Formation (20°C/65% R.H.)	2-3 mm / day
Tack-free Time	15 mins
Elongation at Break (DIN 53504)	> %450
Elastic Recovery (ISO 7389)	>%95



PMS-560

SANITAN NT NEUTRAL SANITARY SILICONE

A high-performance, fast-curing, 100% pure neutral silicone that provides excellent adhesion and sealing without damaging delicate surfaces, while preventing mold and mildew formation in wet and humid environments.

SPECIFICATIONS

- Made of 100% pure silicone.
- Solvent-free and does not lose volume.
- Neutral curing formula ensures odorless application.
- Resistant to detergents, cleaning agents, and chemicals.
- Highly resistant to moisture and water.
- Provides strong protection against mold and mildew formation.
- Suitable for use on glass, tile, ceramic, metal, concrete, and wood surfaces.
- Adheres strongly to acrylic and polyester bathtubs and sinks, as well as PVC shower cabins and trays.
- Does not damage delicate surfaces during application.

APPLICATION AREAS

- Used in high-humidity, water-exposed areas such as bathrooms, kitchens, pools, and saunas; for sealing and installation of countertops, sinks, and shower units; in plumbing and ventilation systems; and in applications requiring mold and mildew resistant performance on delicate surfaces.

SHELF LIFE	15 Months
VOLUME	280 ml cartridge
COLOR	Transparent, White
Basis	Neutral
Hardness (DIN 53505)	20 ± 5 Shore A

Density	1,03 gr/lt
Skin Formation (20°C/65% R.H.)	3 mm / day
Tack-free Time	15 mins
Elongation at Break (DIN 53504)	> %350
Elastic Recovery (ISO 7389)	>%95

SILICONES



PMS-550 OXIME MIRROR SILICONE

A 100% pure neutral silicone that does not damage mirrors or delicate metals, adheres strongly to construction materials, does not lose volume, is unaffected by weather conditions, and retains its flexibility for a long time.

SPECIFICATIONS

- Odorless and suitable for use in enclosed spaces.
- Resistant to temperature changes and harsh outdoor conditions.
- Fast and neutral curing.
- Does not lose volume over time.
- Does not damage delicate surfaces or mirrors.
- Provides strong, primerless adhesion to common porous and non-porous construction materials such as concrete, stone, brick, ceramic, glass, metal, and wood.

APPLICATION AREAS

- Used in precision mirror applications, in movement joints requiring high elasticity, for sealing on acid-sensitive alkaline and metal surfaces, and on materials such as concrete, brick, steel, chrome, brass, zinc, copper, enamel, epoxy, polyester, PVC, ceramic, tile, and glass.

SHELF LIFE	15 Months
VOLUME	280 ml cartridge
COLOR	Transparent
Basis	Neutral Oxime
Hardness (DIN 53505)	25 ± 5 Shore A

Density	1,03 gr/lt
Skin Formation (20°C/65% R.H.)	3 mm / day
Tack-free Time	15 mins
Elongation at Break (DIN 53504)	> %450
Elastic Recovery (ISO 7389)	> %95



PMS-270 GLASS AQUARIUM SILICONE

A high-quality, 100% pure acetoxysilicone used for sealing and bonding in glass applications and preferred for aquarium manufacturing.

SPECIFICATIONS

- Made of 100% silicone.
- Solvent-free and does not lose volume.
- Fast curing; becomes waterproof within hours after application.
- Resistant to water and seawater.
- Offers high mechanical strength.
- Resistant to UV rays and weather conditions.
- Provides high movement capability and does not crack.
- Withstands high temperatures up to 180°C.
- Contains no chemicals harmful to aquarium life.
- Provides excellent adhesion to glass surfaces.

APPLICATION AREAS

- Used in aquarium manufacturing, for bonding glass materials, installing glass showcases, and adhering to surfaces such as tile, metal, and ceramic.

SHELF LIFE	15 Months
VOLUME	280 ml cartridge
COLOR	Transparent
Basis	Acetoxysilicone
Hardness (DIN 53505)	25 ± 5 Shore A

Density	1,02 gr/lt
Skin Formation (20°C/65% R.H.)	3-4 mm / day
Tack-free Time	15 mins
Elongation at Break (DIN 53504)	> %350
Elastic Recovery (ISO 7389)	> %95



PMS-360

RTV GASKET MAKER

A high-quality acetoxo high-temperature silicone formulated for gasket applications in automotive and other high-heat environments, maintaining flexibility up to +300°C.

SPECIFICATIONS

- Unaffected by temperature changes up to 300°C.
- Continuously resistant to heat up to 250°C while maintaining performance.
- Forms a high-strength gasket that can replace conventional gaskets.
- Can be applied over existing gaskets to enhance durability.
- Resistant to chemicals, oils, and solvents.
- Made with high-quality silicone that prevents shrinkage and cracking.
- Retains flexibility even under extreme temperatures (-50°C to +300°C).
- Long-lasting and durable.

APPLICATION AREAS

- Used in automobiles, machinery, heating systems, industrial ovens, and chimneys for gasket applications exposed to high heat and / or temperature fluctuations; in areas requiring sealing where rubber gaskets cannot be applied; and in ventilation systems.

SHELF LIFE	15 Months
VOLUME	280 ml cartridge
COLOR	Red, Black, Grey
Basis	Acetoxo
Hardness (DIN 53505)	25 ± 5 Shore A

Density	1,05 gr/lt
Skin Formation (20°C/65% R.H.)	2-3 mm / day
Tack-free Time	15 mins
Elongation at Break (DIN 53504)	> %300



PMS-660

RTV NT NEUTRAL GASKET MAKER

A high-temperature silicone formulated to create liquid gaskets for automotive and high-heat applications; provides high performance on delicate surfaces thanks to its neutral curing and maintains flexibility up to +300°C.

SPECIFICATIONS

- Unaffected by temperature changes up to 300°C.
- Continuously resistant to 250°C while maintaining flexibility.
- Forms a high-strength gasket that can replace conventional gaskets.
- Can be applied over existing gaskets to enhance durability.
- Resistant to chemicals, oils, and solvents.
- Made with high-quality silicone that prevents shrinkage and cracking.
- Cures odorlessly.

APPLICATION AREAS

- Used in automobiles, machinery, and heating systems for gasket applications on delicate surfaces exposed to high heat and/ or temperature fluctuations; in industrial ovens, stoves, and chimneys; in areas requiring sealing where rubber gaskets cannot be applied; in liquid gasket applications demanding superior sealing performance; and in ventilation systems.

SHELF LIFE	15 Months
VOLUME	280 ml cartridge
COLOR	Red, Black, Grey, Blue
Basis	Neutral
Hardness (DIN 53505)	30 ± 5 Shore A

Density	1,05 gr/lt
Skin Formation (20°C/65% R.H.)	2-3 mm / day
Tack-free Time	10 mins
Elongation at Break (DIN 53504)	> %400

SILICONES



PMS-275

ALL-PURPOSE PURE ACETOXY SILICONE

A 100% pure acetoxy silicone designed for high quality and performance in general-purpose applications; resistant to water and moisture, and does not lose volume after application.

SPECIFICATIONS

- Does not crack or lose volume.
- Durable and retains elasticity.
- Provides strong adhesion.
- Performs effectively under very high and very low temperatures.
- Fast curing; becomes waterproof within hours after application.
- Offers 20% movement capability, suitable for use in moving joints.
- Resistant to UV rays, weather conditions, and wear.
- Adheres strongly to common construction materials such as steel, tile, glass, ceramic, painted wood, and polyester.

APPLICATION AREAS

- Used in moving structural areas such as windows, doors, joinery, metal, and plastic components; in prefabricated structures; and for general-purpose joint sealing applications.

SHELF LIFE	15 Months
VOLUME	280 ml cartridge
COLOR	Transparent, White
Basis	Acetoxy
Hardness (DIN 53505)	23 ± 5 Shore A

Density	1,02 gr/lt
Skin Formation (20°C/65% R.H.)	3-4 mm / day
Tack-free Time	10 mins
Elongation at Break (DIN 53504)	> %350
Elastic Recovery (ISO 7389)	> %95



PMS-252

UNIVERSAL MULTI-PURPOSE SILICONE

An easy-to-apply, well-adhering acetoxy silicone designed for general-purpose sealing applications required in building construction.

SPECIFICATIONS

- Suitable for interior use.
- Resistant to water contact.
- Adheres to common construction materials.
- Non-sag on vertical surfaces.
- Has a flexible structure.
- Resistant to cracking.
- Provides UV resistance.

APPLICATION AREAS

- Used in general interior applications, for sealing and installation of aluminum, PVC, and wooden joinery; in baseboard and parquet joints; and for mounting decorative products.

SHELF LIFE	15 Months
VOLUME	280 ml cartridge
COLOR	Transparent, White, Black, RAL 7016, RAL 1013, Silver and +10 color options
Basis	Acetoxy
Hardness (DIN 53505)	25 ± 5 Shore A

Density	1,02 gr/lt
Skin Formation (20°C/65% R.H.)	3-4 mm / day
Tack-free Time	15 mins
Elongation at Break (DIN 53504)	> %350
Elastic Recovery (ISO 7389)	> %95



PMS-150

SIL-FIX GENERAL PURPOSE SILICONE

An acetoxysilicone formulated for general-purpose sealing applications required in building construction.

SPECIFICATIONS

- Forms a waterproof barrier when cured.
- Features an acetoxysilicone curing system.
- Has a flexible structure.
- Provides basic resistance to water and air.
- Adheres to common construction materials.
- Resistant to UV rays.
- Formulated for general-purpose use.

APPLICATION AREAS

- Used in general interior sealing applications, in fixed interior joint gaps, in areas requiring protection against wind and dust penetration, and at countertop connection points.

SHELF LIFE	15 Months
VOLUME	280 ml cartridge
COLOR	Transparent, White
Basis	Acetoxysilicone
Hardness (DIN 53505)	17 ± 5 Shore A

Density	0,96 gr/lt
Skin Formation (20°C/65% R.H.)	2-3 mm / day
Tack-free Time	25 mins
Elongation at Break (DIN 53504)	> %550
Elastic Recovery (ISO 7389)	>%95



PMS-482

EPDM PLUS MEMBRANE ADHESIVE

EPDM Plus ensures seamless adhesion of membranes to various porous and non-porous construction materials. It is a high-performance, long-lasting adhesive sealant that contains no solvents.

SPECIFICATIONS

- Flexible and allows for structural movement.
- Does not lose volume over time.
- Provides high performance in EPDM membrane applications.
- Extremely strong adhesion.
- Non-corrosive.
- Provides adhesion with or without primer.
- Water-resistant and highly UV-resistant.
- Non-sag on vertical surfaces.
- Unaffected by weather conditions.
- Retains properties under temperature variations.
- Adheres to various construction materials such as metal, aluminum, wood, PVC, and concrete.

APPLICATION AREAS

- Used for bonding membranes such as EPDM, PVC, and waterproofing sheets (vapor barriers) in exterior sealing applications, as well as for the insulation of joints and edge details of EPDM membrane coverings in façade and roof systems.

SHELF LIFE	15 Months
VOLUME	600 ml sausage
COLOR	Black
Basis	Neutral Oxime
Hardness (DIN 53505)	35 ± 5 Shore A

Density	1,35± 0,02
Skin Formation (20°C/65% R.H.)	4,5 - 5 mm / day
Tack-free Time	20 mins
Elongation at Break (DIN 53504)	> 350
Elastic Recovery (ISO 7389)	>%75

EASYPACK SILICONES



PMS-950

EASYPACK ALL PURPOSE PURE SILICONE

A high-quality, 100% pure acetoxy silicone that can be used in almost all construction applications and allows easy use without the need for an application gun.

SPECIFICATIONS

- Does not shrink or crack.
- Durable and maintains elasticity.
- Provides strong adhesion to surfaces after curing.
- Retains properties under large temperature variations.
- Fast curing; becomes waterproof shortly after application.
- Compatible with common construction materials such as steel, tile, glass, ceramic, painted wood, and polyester.
- Suitable for moving joints thanks to its high movement capability.
- Resistant to UV rays and weather conditions.
- Features a patented special packaging that prevents drying and allows reuse.

APPLICATION AREAS

- Used in window, joinery, metal, and plastic movable structural elements; in prefabricated buildings; for general-purpose bonding applications; and for general joint sealing works.

SHELF LIFE	15 Months
VOLUME	200 ml cartridge with applicator gun
COLOR	Transparent, White
Basis	Acetoxy
Hardness (DIN 53505)	20 ± 5 Shore A

Density	1,02 gr/lt
Skin Formation (20°C/65% R.H.)	3-4 mm / day
Tack-free Time	10 mins
Elongation at Break (DIN 53504)	> % 370
Elastic Recovery (ISO 7389)	>%95



PMS-960

EASYPACK SANITAN HYGIENE SILICONE

A high-quality, 100% pure neutral silicone that allows use without an application gun, is odorless, does not damage delicate surfaces, and is especially recommended for use in humid environments.

SPECIFICATIONS

- Made of 100% pure silicone.
- Solvent-free and does not lose volume.
- Neutral curing formula produces very low odor.
- Contains no corrosive acids.
- Resistant to detergents, cleaning agents, and chemicals.
- Highly resistant to moisture and water
- Suitable for use on glass, tile, ceramic, metal, concrete, and wood surfaces.
- Provides strong adhesion to acrylic and polyester bathtubs and sinks, as well as PVC shower cabins and trays.
- Features patented special packaging that prevents drying and allows reuse.

APPLICATION AREAS

- Used in environments with constant water contact such as shower cabins, trays, bathtubs, and sinks; for installation and sealing of kitchen and bathroom countertops; in high-humidity areas like saunas, pools, baths, and steam rooms; in plumbing penetrations; and in silicone applications where mold and mildew prevention is required.

SHELF LIFE	15 Months
VOLUME	200 ml cartridge with applicator gun
COLOR	Transparent, White
Basis	Acetoxy
Hardness (DIN 53505)	20 ± 5 Shore A

Density	1,02 gr/lt
Skin Formation (20°C/65% R.H.)	3-4 mm / day
Tack-free Time	15 mins
Elongation at Break (DIN 53504)	> % 490
Elastic Recovery (ISO 7389)	>%95



PMS-970

EASYPACK RTV GASKET MAKER

A high-quality acetoxo high-temperature silicone, formulated for liquid gasket applications, easily applicable thanks to its self-dispensing design and compact structure, suitable for automotive and machinery use, maintaining flexibility up to +300°C.

SPECIFICATIONS

- Unaffected by temperature variations up to 300°C.
- Continuously resistant to 250°C while maintaining performance.
- Forms a high-strength gasket that can replace traditional gaskets.
- Can be applied over existing gaskets to enhance durability.
- Features patented packaging that prevents drying and allows reuse.
- Resistant to chemicals, oils, and solvents.
- Made with high-quality silicone that prevents shrinkage and cracking.
- Retains flexibility even under extreme temperatures (-50°C to +300°C) and ensures long-lasting performance.

APPLICATION AREAS

- Used in window, joinery, metal, and plastic movable structural elements; in prefabricated buildings; for general-purpose bonding and joint sealing applications; and in automobiles, machinery, heating systems, industrial ovens, and chimneys for gasket applications exposed to high heat and temperature fluctuations.

SHELF LIFE	15 Months
VOLUME	200 ml cartridge with applicator gun
COLOR	Red, Gray, Black
Basis	Acetoxo
Hardness (DIN 53505)	25 ± 5 Shore A

Density	1,05 gr/lt
Skin Formation (20°C/65% R.H.)	3-4 mm / day
Tack-free Time	10 mins
Elongation at Break (DIN 53504)	> % 310



PMS-975

EASYPACK RTV NT NEUTRAL GASKET MAKER

A high-quality, odorless, neutral high-temperature silicone formulated for specialized liquid gasket applications; easy to apply thanks to its self-dispensing design and compact structure; adheres strongly without damaging delicate surfaces; maintains flexibility up to +300°C; and is ideal for automotive and machinery use.

SPECIFICATIONS

- Unaffected by temperature variations up to 300°C.
- Continuously resistant to 250°C while maintaining flexibility.
- Forms a high-strength gasket that can replace traditional gaskets.
- Can be applied over existing gaskets to enhance durability.
- Cures odorlessly.
- Features patented packaging that prevents drying and allows reuse.
- Resistant to chemicals, oils, and solvents.
- Made with high-quality silicone that prevents shrinkage and cracking.
- Neutral curing allows safe use on delicate surfaces.

APPLICATION AREAS

- Used in window, joinery, metal, and plastic movable structural elements; prefabricated buildings; general bonding and joint sealing applications; automobiles, machinery, heating systems, industrial ovens, and chimneys; for gasket applications on delicate surfaces exposed to high heat or temperature fluctuations; in areas where rubber gaskets cannot be applied; and in liquid gasket applications requiring superior sealing performance.

SHELF LIFE	15 Months
VOLUME	200 ml cartridge with applicator gun
COLOR	Red, Grey, Black, Blue
Basis	Neutral
Hardness (DIN 53505)	30 ± 5 Shore A

Density	1,05 gr/lt
Skin Formation (20°C/65% R.H.)	3 mm / day
Tack-free Time	10 mins
Elongation at Break (DIN 53504)	> % 450

AEROSOL PU FOAMS



PMF-630

B1 FIRE RATED PU FOAM

A fire-resistant (B1) foam used for installation and gap filling in fire applications; its non-flammable formulation helps prevent the spread of fire.

SPECIFICATIONS

- Slows down ignition.
- Provides excellent bonding and filling properties.
- Ensures superior insulation against gas and smoke.
- Available in both straw (pipette) and gun-grade packaging options.
- Offers effective thermal and sound insulation.
- Delivers excellent installation performance.
- Adheres perfectly to wood, metal, glass, and concrete.

APPLICATION AREAS

- Used for fire-resistant insulation of electrical cables and conduit pipes, in movement joints requiring fire-resistant sealing, in all applications where maintaining sealing performance under flame exposure is essential, and in areas where fire safety regulations are mandatory.

SHELF LIFE	12 Months
VOLUME	750 ml tin
COLOR	Red
Basis	Polyurethane
Density	20-25 kg/m ³

Expansion	% 130 - %180
Full Drying	16 h
Cutting Time (20°C/%65 R.H.)	30-40 mins
Fire resistant for up to 6 hours	



PMF-635

B2 FIRE RESISTANT FOAM

A fire-resistant (B2) foam used for installation and gap filling in fire applications; its non-flammable formulation helps prevent the spread of fire.

SPECIFICATIONS

- Slows down combustion.
- Provides excellent bonding and filling properties.
- Ensures superior insulation against gas and smoke.
- Offers effective thermal and acoustic insulation.
- Delivers excellent installation performance.
- Adheres perfectly to wood, metal, glass, and concrete.

APPLICATION AREAS

- Used for fire-resistant insulation of electrical cables and conduit pipes, in movement joints requiring fire-resistant sealing, in all applications where maintaining sealing performance under flame exposure is critical, and in areas where fire safety regulations are mandatory.

SHELF LIFE	12 Months
VOLUME	750 ml tin
COLOR	Orange
Basis	Polyurethane
Density	20-25 kg/m ³

Expansion	% 400
Full Drying	16 h
Cutting Time (20°C/%65 R.H.)	25 mins
Fire resistant for up to 2 hours	



PMF-520

EXPERT GUN FOAM

The high-efficiency gun-grade foam is formulated for professional use. It is a high-strength polyurethane foam with a fine cell structure, controlled expansion, and excellent adhesion to surfaces.

SPECIFICATIONS

- Produces low-density, high-volume foam.
- Becomes cuttable within 30 minutes.
- Non-sag on vertical surfaces.
- Features a fine and uniform cell structure.
- Adheres strongly to almost all construction materials.

APPLICATION AREAS

- Used for filling gaps around door and window frames; in the installation of panels, boards, air conditioners, and ventilation ducts; for insulating holes, cracks, and cavities; and in the installation of aluminum, PVC, and wooden joinery.

SHELF LIFE	15 Months
VOLUME	750 ml tin
COLOR	Light Yellow
Basis	Polyurethane
Density	18-20 kg/m ³

Expansion	% 30- %70
Full Drying	8-16 h
Cutting Time (20°C/%65 R.H.)	25-35 mins



AEROSOL PU FOAMS



PMF-220

FIXER FIXING FOAM

A specially formulated, high-volume polyurethane foam with a dense cell structure, controlled expansion, and high strength, designed for common installation applications.

SPECIFICATIONS

- Provides higher installation capacity thanks to its high yield.
- Low expansion prevents excessive pressure on surfaces and does not deform frames.
- Dries quickly and becomes cuttable in a short time.
- Does not shrink, ensuring excellent fixation.
- Once hardened, the foam can be sanded and painted.
- Adheres strongly to construction materials.
- Equipped with an ergonomic application straw.
- Can be applied at temperatures as low as +10°C.
- Contains no propellants harmful to the ozone layer.
- Used for filling gaps, cracks, and holes.

APPLICATION AREAS

- Used for fixing door and window frames to walls; installing panels, boards, air conditioners, and ventilation ducts; mounting aluminum, PVC, and wooden joinery; and for bonding and insulating common construction materials.

SHELF LIFE	15 Months
VOLUME	750 ml tin
COLOR	Light Yellow
Basis	Polyurethane
Density	23-32 kg/m ³

Expansion	%130-%180
Full Drying	16-24 h
Cutting Time (20°C/%65 R.H.)	30-40 mins



PMF-110

FILLMAX GAP FILLING FOAM

A cost-effective polyurethane foam designed for general-purpose gap-filling applications in buildings.

SPECIFICATIONS

- Provides strong adhesion and filling properties.
- Does not shrink and expands in a controlled manner.
- Can be cut, sanded, and painted after curing.
- Non-sag and stable on vertical surfaces.
- Offers controlled expansion.
- Ensures effective thermal and acoustic insulation.

APPLICATION AREAS

- Used for filling gaps around door and window frames; in the installation of panels, boards, air conditioners, and ventilation ducts; for insulating holes, cracks, and cavities; and in the installation of aluminum, PVC, and wooden joinery.

SHELF LIFE	15 Months
VOLUME	600 g / 860 g tin
COLOR	Light Yellow
Basis	Polyurethane
Density	24-28 kg/m ³

Expansion	% 150 - %200
Full Drying	12-24 h
Cutting Time (20°C/%65 R.H.)	30-40 mins



PMF-625

FIXATE ADHESIVE FOAM

A non-expanding, strong-bond polyurethane adhesive foam specially formulated for fixing polystyrene-based insulation boards and decorative moldings, suitable for gun application.

SPECIFICATIONS

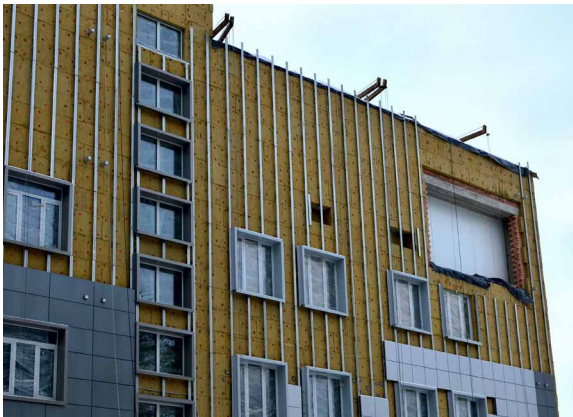
- Lightweight; unlike cement-based adhesives, it does not add static load to the building.
- Low expansion applies minimal pressure on surfaces.
- More economical compared to alternative adhesives.
- Contains flame-retardant additives.
- Dries quickly, speeding up and simplifying insulation board installation.
- Contributes to thermal insulation performance.
- Saves time for the installer during insulation board application.

APPLICATION AREAS

- Used for bonding EPS and XPS insulation boards on building exteriors; attaching boardex insulation panels; bonding and installing materials such as wood, concrete, metal, and brick; applications where foam expansion is not desired; cooling system installations; bonding polystyrene moldings to concrete, plaster, and wood; bonding polyurethane and rock wool panels; and installing wooden stairs, laminate flooring, and baseboards.

SHELF LIFE	15 Months
VOLUME	750 ml tin
COLOR	Light Yellow
Basis	Polyurethane
Density	21 kg/m ³

Expansion	% 30 - %50
Full Drying	8-16 h
Cutting Time (20°C/%65 R.H.)	25-35 mins



AEROSOL PU FOAMS



PMF-320

MAXI HIGH YIELD FOAM

A straw-applied installation and gap-filling foam designed for high yield and volume, recommended for cost-effective mounting applications.

SPECIFICATIONS

- Provides high yield up to 60 liters.
- Features a fine and uniform cell structure.
- Adheres strongly to almost all construction materials.
- Controlled expansion applies very low pressure on surfaces.
- Suitable for use in all seasons.

APPLICATION AREAS

- Used for filling gaps around door and window frames; in the installation of aluminum, PVC, and wooden joinery; for mounting panels, boards, air conditioners, and ventilation ducts; and for insulating holes, cracks, and cavities.

SHELF LIFE	15 Months
VOLUME	750 ml tin
COLOR	Light Yellow
Basis	Polyurethane
Density	21-23 kg/m ³

Expansion	% 50 - %80
Full Drying	12-24 h
Cutting Time (20°C/%65 R.H.)	25-35 mins



PMF-640

PREMIUM SAFETY VALVE FOAM

A high-yield installation foam with a premium safety valve that eliminates the risk of blockage after use, allowing multiple applications.

SPECIFICATIONS

- Equipped with a non-clogging valve, enabling repeated use of the can.
- Delivers up to 30% higher yield compared to standard general-purpose foams thanks to its special formulation
- Cures very quickly; dries easily even in low temperatures and low-humidity environments.
- Adheres strongly to common construction materials.
- Provides effective sound and heat insulation.

APPLICATION AREAS

- Used for filling gaps around door and window frames; for mounting panels, boards, air conditioners, and ventilation ducts; for insulating holes, cracks, and cavities in buildings; and for installing aluminum, PVC, and wooden joinery.

SHELF LIFE	15 Months
VOLUME	600 g / 860 g tin
COLOR	Light Yellow
Basis	Polyurethane
Density	23-26 kg/m ³

Expansion	%130 - %200
Full Drying	12-24 h
Cutting Time (20°C/%65 R.H.)	30-40 mins



PMA-660

LANDSCAPE BLACK FOAM

Landscape foam is a polyurethane-based adhesive foam specially formulated for bonding architectural claddings and landscape elements to outdoor surfaces such as stone, brick, concrete, and wood. It features low expansion and high adhesion strength.

SPECIFICATIONS

- Low-expansion formula prevents overflow or misalignment on stone surfaces.
- High initial adhesion allows heavy stones and panels to be applied without additional fixing.
- Provides strong and durable bonding on various surfaces such as concrete, natural stone, brick, and wood.
- Cures within approximately 1 hour, reducing application time and saving labor.
- Weather-resistant structure ensures reliable outdoor use throughout all seasons.
- Gun-grade application system enables precise dosing and clean application.
- Solvent-free formula is environmentally friendly and safe for use on polystyrene-based surfaces.
- Contains flame-retardant additives for enhanced fire safety.
- Fine and uniform cell structure ensures a smooth and consistent application surface.

APPLICATION AREAS

- Used for bonding natural or artificial stones to garden walls; for brick and stone cladding in outdoor fireplaces and barbecue areas; for installing decorative façade panels on concrete, brick, or wooden surfaces; for securing columns, curbs, and architectural details in landscape projects; and for fixing pavements in terraces, courtyards, and walkways.

SHELF LIFE	15 Months
VOLUME	500 ml tin
COLOR	Anthracite
Density	21 kg/m ³

Tack-free Time	5-7 mins
Cutting Time	25-35 mins
Shrinkage	%5 Max
Fire Rate	B3



PMA-115

CLEANSE FOAM CLEANER

A solvent-based aerosol foam cleaner used for cleaning foam guns. It also helps remove uncured foam residues effectively.

SPECIFICATIONS

- Cleans PU foam immediately after application.
- Softens hardened PU foam residues.
- Keeps foam guns clean and functional.
- Easily attaches to foam guns with its adapter.
- Dissolves many types of industrial oils.

APPLICATION AREAS

- Used for cleaning freshly applied, uncured PU foams, for cleaning foam guns after application, and for cleaning tools and surfaces.

SHELF LIFE	VOLUME	COLOR
24 Months	500 ml tin	Colorless

ADHESIVES



PMA-690

CORNER BOND EXPRESS CORNER ADHESIVE

A polyurethane-based corner adhesive used for bonding aluminum profile joints; it cures very quickly and is resistant to water.

SPECIFICATIONS

- Provides D4-level water and moisture resistance according to DIN EN 204 standards.
- Ensures strong adhesion and performs well on uneven surfaces thanks to its gap-filling properties.
- Dries very quickly with short open and pressing times, making it easy to apply.
- Forms a skin within 10 minutes and reaches maximum strength after curing.
- Non-sag, gel-like consistency allows use on vertical surfaces.
- Can be painted and sanded after curing.
- Suitable for both interior and exterior applications.

APPLICATION AREAS

- Used for bonding aluminum profile joints, corner brackets, aluminum doors, and aluminum windows.

SHELF LIFE	12 Months
VOLUME	280 ml cartridge
COLOR	Honey Color
Basis	Polyurethane

Density	1,15 gr/ml
Open time (20°C)	10 mins
Water and humidity resistance	D4





PMA-585

CLEAR BOND LIQUID NAIL

A polyurethane-based adhesive that enables bonding between various types of construction materials; it is water-resistant and fast-curing.

SPECIFICATIONS

Provides D4-level water and moisture resistance according to DIN EN 204 standards.

Ensures strong adhesion and performs well on uneven surfaces thanks to its gap-filling property.

Dries very quickly with short open and pressing times, making it easy to apply.

Forms a skin within 10 minutes and reaches maximum strength in up to 12 hours.

- Non-sag, gel-like consistency allows application on vertical surfaces.

- Can be painted and sanded after curing.

- Suitable for both interior and exterior use.

- Provides strong bonding between almost all types of wood, as well as surfaces such as metal, tile, glass, and concrete.

APPLICATION AREAS

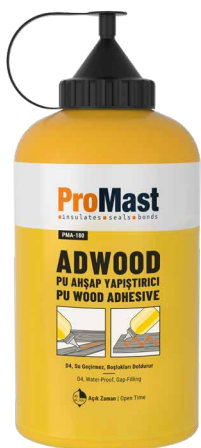
- Used in wooden furniture manufacturing, boat and yacht production, wooden window and door fabrication and installation; for bonding materials such as metal, glass, tile, and concrete onto wood; and for mounting kitchen and bathroom cabinets onto tiled surfaces.

SHELF LIFE	12 Months
VOLUME	280 ml cartridge
COLOR	Transparent
Basis	Polyurethane

Density	1,15 gr/ml
Open time (20°C)	10 mins
Water and humidity resistance	D4



ADHESIVES



PMA-180

ADWOOD PU WOOD ADHESIVE

A polyurethane-based liquid adhesive for general woodworking applications, offering easy use with sufficient open time and appropriate pressing duration, and providing high resistance to water and moisture.

SPECIFICATIONS

- Solvent-free formulation.
- Provides D4-level water and moisture resistance according to DIN EN 204 standards.
- Suitable for both interior and exterior use.
- Highly resistant to harsh weather conditions.
- Can be painted after curing.
- Exhibits limited expansion and fills gaps effectively.
- Bonds wood strongly to itself as well as to concrete, metal, and certain plastics.

APPLICATION AREAS

- Used for bonding almost all types of wood to each other, as well as to metal, certain plastics, stone, brick, and concrete; and for assembling and repairing wooden structural elements and furniture.

SHELF LIFE	12 Months
VOLUME	750 g
COLOR	Honey Color
Basis	Polyurethane

Density	1,10 g/ml
Open time (20°C)	40 mins
Water and humidity resistance	D4



PMA-282

ADWOOD EXPRESS - TRANSPARENT EXPRESS WOOD ADHESIVE

A polyurethane-based liquid adhesive that enables fast assembly with its short pressing time, providing high strength and reliable adhesion in wood installation applications.

SPECIFICATIONS

- Has a very short open and pressing time.
- Fluid consistency with low viscosity.
- Resistant to moisture, heat, and water.
- Odorless.
- Provides strong adhesion to various construction materials such as wood, concrete, metal, polyurethane and polystyrene foam, natural stone, MDF, ceramic, glass, and PVC.

APPLICATION AREAS

- Used for bonding and repairing wooden structural elements, in furniture manufacturing and repair, in marine vessels, in wooden window and door production, and for bonding door frames.

SHELF LIFE	12 Months
VOLUME	750 g
COLOR	Honey Color
Basis	Polyurethane

Density	1,10 g/ml
Open time (20°C)	10-15 mins
Water and humidity resistance	D4



PMA-170

D4 MARINE GLUE

A single-component, moisture-curing polyurethane adhesive that provides strong, water-resistant bonding between wooden elements or between wood and other materials.

SPECIFICATIONS

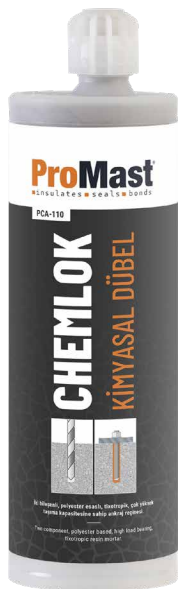
- Provides D4-level water and moisture resistance according to DIN EN 204 standards.
- Suitable for both interior and exterior applications.
- Exhibits limited expansion and effectively fills gaps.

APPLICATION AREAS

- Used for bonding almost all types of wood to each other, as well as to metal, certain plastics, stone, brick, and concrete; and for assembling and repairing wooden structural elements and furniture.

SHELF LIFE	15 Months
VOLUME	500 g
COLOR	Honey Color
Basis	Polyurethane

Density	1,10 g/ml
Open time (20°C)	10-15 mins
Water and humidity resistance	D4



PCA-110

CHEMLOK CHEMICAL ANCHOR

An epoxy acrylate polyester-based, two-component, thixotropic, cartridge-packaged chemical anchoring epoxy with high strength.

SPECIFICATIONS

- Provides high mechanical strength in a short time thanks to its fast-curing formula.
- Easy to apply with a cartridge system, saving labor and time.
- Thixotropic (paste-like) consistency prevents sagging in vertical and overhead applications.
- Protects rebar and fastening elements against corrosion.
- Offers high resistance to various chemicals and environmental conditions.

APPLICATION AREAS

- Used for anchoring and repairing rebars and threaded rods into concrete and structural elements such as solid or hollow bricks; for embedding metal reinforcements; anchoring prefabricated structural components; fixing injection packers and various fastening devices; anchoring bolts, studs, and pins; installing central heating, ventilation, and similar piping systems; and bonding different types of construction materials together.

SHELF LIFE	12 Months
VOLUME	410 ml cartridge
Basis	Polyester
Full Cure	7 days

Compressive Strength	60-70 N/mm ² / 7 days
Adhesion - Concrete Surface	>4 N/mm ² Concrete Failure
Pull-Off Strength (EN 1181)	≤ 0,6 mm (At 75 kN load)
Creep Under Tensile Load	≤ 0,6 mm (At 50 kN load for 3 months)

SEALANTS



PMW-200

B1 ACRYSEAL-FR NEUTRAL FIRE RESISTANT SEALANT

A single-component neutral sealant that forms a fire-resistant, highly flexible sealing material when cured.

SPECIFICATIONS

- Asbestos- and halogen-free formulation.
- Single-component and ready to use.
- Prevents smoke propagation.
- Paintable after curing.
- Provides acoustic insulation.
- Used in the joints of all types of joinery, plaster, frames, and other building materials.
- Maintains flame-resistant properties for up to 240 minutes.

APPLICATION AREAS

- Used to provide fire resistance in floor and wall penetrations for pipes or cable trays, in linear joints, and for sealing steel ducts, trays, cables, and cable channels; also used for filling applications requiring fire resistance in interior spaces, and around aluminum, wood, and PVC frames and windows.

SHELF LIFE	12 Months
VOLUME	310 ml cartridge / 600 ml sausage
COLOR	White, Grey
Basis	Acrylic
Hardness (DIN 53505)	40 ± 5 Shore A

Expansion	%200
Tack-free Time	15 - 30 mins
Skin Formation (20°C / 65% R.H.)	2 mm / day
Fire resistant for up to 2 hours	



PMW-165

ACRYSEAL-PLUS SILICONIZED ACRYLIC SEALANT

A durable, paintable, acrylic-based siliconized sealant used around window and door frames, as well as in cracks and joints.

SPECIFICATIONS

- Ready-to-use, single-component sealing material.
- Solvent-free and odorless.
- Retains elasticity over time.
- Paintable after curing.
- Water-based formulation free from harmful chemicals to humans and the environment.
- Provides excellent adhesion to construction materials such as concrete, brick, metal, and wood.

APPLICATION AREAS

- Used in the installation of PVC, wooden, and aluminum joinery; at junctions of construction materials; for filling joints and gaps; and in areas with low movement.

SHELF LIFE	18 Months
VOLUME	310 ml cartridge
COLOR	White, RAL 7016
Basis	Acrylic
Curing System	Moisture curing

Density	1,55 gr/ml
Tack-free Time	20 mins
Temperature Resistance (Cured)	From 20°C to +70°C
Application Temperature	Between 5°C and +40°C



PMP-730

GLAZEPRO BALCONY GLAZING ADHESIVE SEALANT

A sealing and adhesive product designed for glass balcony installations and stone bonding applications.

SPECIFICATIONS

- Maintains color stability over time and is resistant to UV rays.
- Extremely durable under all weather conditions such as rain, snow, wind, and direct sunlight.
- Does not cause corrosion on construction materials.
- Retains permanent elasticity after curing.

APPLICATION AREAS

- Used in glass balcony systems, exterior aluminum composite and inter-composite applications, and glass-to-glass expansion joints where excellent adhesion and durability are required; in odorless-curing sealing and filling applications; and for bonding marble, granite, and other natural stones.

SHELF LIFE	15 Months
VOLUME	600 ml sausage
COLOR	Black
Basis	Polyurethane
Hardness (DIN 53505)	45 ± 5 Shore A

Density	1,30 g/ml
Skin Formation (20°C / 65% R.H.)	2,5 - 3 mm / day
Tack-free Time	30 mins
Elongation at Break (DIN 53504)	> 500



PMP-725 / 735 / 755

SEAL & BOND ADHESIVE SEALANT

A polyurethane-based, single-component sealant that maintains elasticity, adheres strongly to surfaces, is paintable, and is suitable for use in movement joints and expansion joint applications.

SPECIFICATIONS

- Medium hardness and high strength.
- Functions both as a sealant and an adhesive.
- Does not lose volume over time.
- Paintable after curing.
- Suitable for both interior and exterior use.
- Ideal for areas with light to medium pedestrian traffic.
- Provides strong adhesion to metal, glass, wood, concrete, brick, and tile.

APPLICATION AREAS

- Used in bonding and sealing applications for motor vehicles and marine vessels; in bodywork manufacturing and assembly; in façade system applications; in furniture production and repair; in sealing of static joints; in roofing applications; and for elastic bonding of construction elements such as wood, drywall, metal, and brick.

SEAL & BOND	SHELF LIFE	VOLUME	COLOR
	12 Months	600 ml sausage	White, Grey, Black
PMP-725	Shore A: 25-30 Density: 1,3-1,4 gr/ml Tack-free Time: 60 mins Curing: 2,5-3 mm Elongation at Break: > 500 Elastic Recovery: 0,90-1,20 MPa		
PMP-735	Shore A: 35-40 Density: 1,3 gr/ml Tack-free Time: 60 mins Curing: 2-2,5 mm Elongation at Break: > 600 Elastic Recovery: 1-1,20 MPa		
PMP-755	Shore A: 50-55 Density: 1,25-1,4 gr/ml Tack-free Time: 45 mins Curing: 2,5-3 mm Elongation at Break: > 600 Elastic Recovery: 0,80-1,20 MPa		

TECHNICAL SPRAYS



PSG-155

BRAKE & CLUTCH CLEANER

Cleans metal surfaces of motor vehicles. Helps eliminate squeaking noises caused by friction. Instantly removes oil, dirt, and dust. Leaves no residue after use.

APPLICATION AREAS

- Used on mechanical and hydraulic discs and cylinders, brake pads, engine surfaces, and clutches.

SHELF LIFE	VOLUME	WEIGHT
24 Months	500 ml tin	320 g



PTS-460

MOLD RELEASE SPRAY

Applicable to all mold surfaces. Ensures smooth release without damage. Reduces friction and prevents sticking in molds. Speeds up production during demolding. Suitable for use across a wide temperature range.

APPLICATION AREAS

- Applied to all mold surfaces to ensure smooth material release.
- Reduces friction within molds.
- Performs effectively across both high and low temperature ranges.

SHELF LIFE	VOLUME	WEIGHT
24 Months	500 ml tin	320 g



PTS-465

SILICONE-FREE MOLD RELEASE SPRAY

Provides excellent release performance on all mold surfaces. Ensures smooth and flawless demolding while minimizing friction. Performs reliably at both high and low temperatures. Its silicone-free formula makes it ideal for paintable parts. Contains an eco-friendly, ozone-safe propellant.

APPLICATION AREAS

- Used across various industries including automotive, electronics, home appliances, construction, and industrial manufacturing.
- Compatible with materials such as natural rubber, nitrile, neoprene, PP, HDPE, LDPE, and PVC.
- Leaves no marks on molded parts, reducing the need for additional surface treatments.
- Allows multiple mold releases with a single application.
- Saves time and reduces product consumption.

SHELF LIFE	VOLUME	WEIGHT
24 Months	500 ml tin	300 g



PTS-480

PROTECTIVE WAX SPRAY

Provides effective rust protection in hard-to-reach areas such as car doors, side panels, trunks, and engine hoods. Highly resistant to water, saltwater vapor, and harsh weather conditions. Repels moisture, adheres strongly to surfaces, and forms a flexible, durable wax layer. Also suitable for equipment and machinery that will remain unused for long periods.

APPLICATION AREAS

- Ideal for protecting the interior parts of vehicles such as cars, trucks, and buses.
- Effectively used on sheet metal surfaces, weld points, and areas within the engine compartment.
- Applicable to trunk sections, doors, side skirts, brake shoes, and similar areas.
- Suitable for protecting machinery, machine components, and parts exposed to outdoor corrosion.

SHELF LIFE	VOLUME	WEIGHT
24 Months	500 ml tin	300 g

TECHNICAL SPRAYS



PTS-410

LIQUID GREASE

Promast Liquid Grease is a type of lubricant that protects machine components and gears against friction. It is used for lubricating moving parts, preventing corrosion, and ensuring quiet and efficient operation of metal components. It also prevents wear, extending the lifespan of parts.

APPLICATION AREAS

- Used in construction machines, forklifts, and all types of gear and chain systems.

SHELF LIFE	VOLUME	WEIGHT
24 Months	400 ml tin	270 g



PTS-420

RUST REMOVER MoS₂

A protective spray used on metal surfaces corroded by rust due to water and moisture exposure. Provides protection against humidity, cleans dust and oil residues from metal surfaces, and forms a thin film layer after application to delay rust formation.

APPLICATION AREAS

- Used in automotive, industrial, and marine applications; suitable for household appliances, nuts and bolts, as well as door and cabinet hinges.

SHELF LIFE	VOLUME	WEIGHT
24 Months	400 ml tin	250 g



PTS-430

SILICONE SPRAY

Can be used on all surfaces suitable for silicone application. Prevents noise and dust infiltration when applied to areas such as door seals. Prevents seals from hardening and extends the lifespan of materials.

APPLICATION AREAS

- Used on vehicle door seals, door hinges, hatch covers, conveyors, and textile machines (including sewing needles).

SHELF LIFE	VOLUME	WEIGHT
24 Months	400 ml tin	245 g



PTS-440

ELECTRIC CONTACT CLEANER

Used to clean electrical and electronic components from dust, oil, and other contaminants. Its volatile structure leaves no residue on the surface. Prevents external effects such as moisture, rust, and corrosion. Provides deep and thorough cleaning on applied surfaces.

APPLICATION AREAS

- Used on all electrical circuits and panels, regulators, household appliances, wiring systems, car door and trunk locks, headlight holders and plugs, as well as hinges, locks, and rails.

SHELF LIFE	VOLUME	WEIGHT
24 Months	400 ml tin	250 g



PTS-450

MULTI PURPOSE LUBRICANT

Easily penetrates surfaces and is resistant to moisture and water. Displaces water and humidity to prevent corrosion and frees parts seized by rust. Reaches difficult-to-access areas, protecting surfaces and ensuring smooth operation of mechanisms through its cleaning action. Extends the lifespan of metals and restores functionality to jammed systems.

APPLICATION AREAS

- Used on metal and rubber parts, garden tools, pedals, hand tools, handles, and electronic devices.

SHELF LIFE	VOLUME	WEIGHT
24 Months	400 ml tin	250 g



PTS-470

RUST REMOVER

It can be used on metal surfaces corroded by rust due to water and humidity. Cleans dust and oil on metal surfaces. Protects against moisture. After use, it forms a thin film on the surface and delays rusting.

APPLICATION AREAS

Used in automotive, industrial, and marine applications; suitable for household appliances, nuts and bolts, as well as door and cabinet hinges.

SHELF LIFE	VOLUME	WEIGHT
24 Months	400 ml tin	250 g

TECHNICAL SPRAYS



PTS-410

ANTI SPATTER

Ideal for electrode, spot, and gas-shielded welding applications. Provides effective protection against welding spatter, keeping torches, nozzles, and work surfaces clean. Prevents spatter adhesion, ensures smooth torch operation, and offers a non-flammable, safe, and practical application.

APPLICATION AREAS

- Formulated with non-flammable ingredients and propellants for safe use in welding operations. Prevents slag and spatter from adhering to the torch and workpiece during welding. Safe for use on surfaces that will be painted. Delivers consistent performance across a wide temperature range in all MIG/MAG welding applications.

SHELF LIFE	VOLUME	WEIGHT
24 Months	400 ml tin	250 g

Home Care Group

Stainless Steel Cleaner & Polish
Air Conditioner & Extractor Filter Cleaner
Refrigerator Cleaner
Oven Cleaner

Tile Cleaner
Screen Cleaner
Furniture Cleaner

Hardware Group

Silicone-Free Mold Release
Transparent Silicone-Free Mold Release
MIG Welding Spray (With/Without Silicone)

Wax Protection Spray
Mold Protection Spray
Label Remover

Automotive Service Group

General Cleaner
Industrial Parts Cleaner
Chain Lubricant / Cleaner
Throttle Body & Carburetor Cleaner
Engine Cleaner
Copper Grease Assembly Assembly Paste Spray
White Lithium Grease

Synthetic Spray
Teflon-Based Liquid Grease
Forklift Chain Lubricant
Non-Greasy Contact Cleaner
Ether Spray (Starting Fluid)
Intake Valve Cleaner
Particulate Filter Cleaner

Automotive Care Group

Wheel Cleaner
Upholstery Cleaner
Dashboard Cleaner
Tar Remover

Quick Shine Spray
De-Icer Spray
Car Interior Air Conditioner Odor Removers

NOTE: These are aerosol products, used in machinery and industrial applications.

PROMAST Kimya San. Tic. A.Ş.
Ovacık Mh. Hacıoğlu Sk.
No:21 B/O 41140 Başiskele KOCAELİ | TURKEY
T. +90 (262) 335 41 82 F. +90 (262) 335 41 83
www.promast.com.tr

